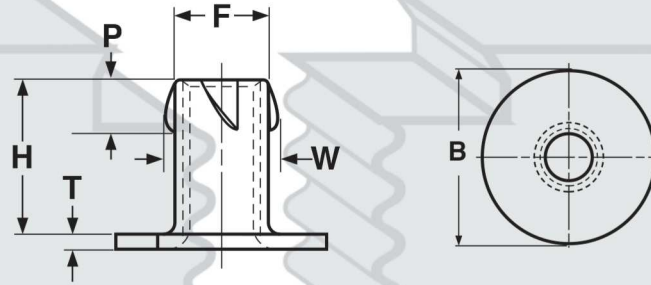


NUTS

PROPELL

Standard Round Base



PROPELL NUTS, ROUND BASE

Part Number	Thread Size	B	F	H	P	T	W	Drill Size
		Flange Diameter	Barrel Diameter	Barrel Height	Skive Length	Material Thickness	Skive Diameter	
		Ref	Ref	Ref	Ref	Ref	Ref	
0804NPS	8-32	23/32	.203	1/4	.118	.031	.250	13/64
1405NPS	1/4-20	3/4	.305	5/16	.155	.047	.352	5/16
1407NPS	1/4-20	3/4	.305	7/16	.175	.047	.352	5/16
1409NPS	1/4-20	3/4	.305	9/16	.175	.047	.352	5/16
3106NPS	5/16-18	7/8	.375	3/8	13/64	.059	.445	3/8
3110NPS	5/16-18	7/8	.370	5/8	.200	.055	.430	3/8
3114NPS	5/16-18	7/8	.385	7/8	9/32	.059	.470	25/64
3707NPS	3/8-16	1	.440	7/16	7/32	.063	.535	29/64
5006NPS	1/2-13	1-1/4	.580	3/8	13/64	.091	.690	19/32

Description	Internally threaded barrel-shaped fasteners integrally formed with a flat base. Around the circumference of the upper third of the barrel, material is removed from three sections creating three triangular "skives".
Applications/ Advantages	The skives around the upper section of the barrel allow for the nut to be retained at the blind end of the fastening. This enables these nuts to be used as levelers or guides. Preferred over T-nuts in harder materials as the propell nut is less likely to split that base material.
Material	Steel C1004-10 low-carbon steel.
Plating	See Appendix-A for plating information.